



London Road, Ditton, Aylesford, ME20 6BZ
Offers Over £650,000



IMPRESSIVE UPDATED FAMILY HOME WITH ADDITIONAL 2 BEDROOM ANNEX. 1935-built house offers a delightful blend of modern living and classic appeal. There is a lovely lounge and a well-appointed modern kitchen/diner. There are three bedrooms upstairs as a family bathroom too.

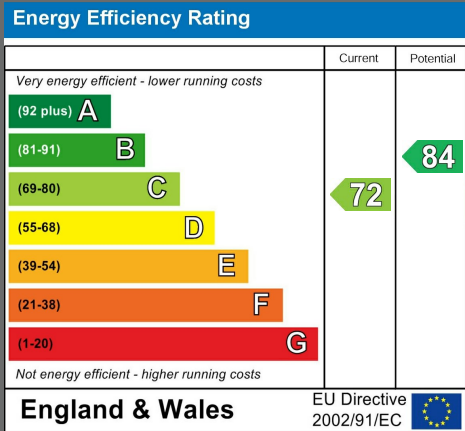
One of the standout features of this property is the expansive garden, measuring an impressive 180 feet in length. Within this huge outdoor space lies a substantial 538 square foot separate annex, which presents a wealth of possibilities for various family needs. Currently the annex has 2 bedroom, lounge, kitchen, bathroom.

The property also boasts a generous driveway, capable of accommodating numerous vehicles, making it ideal for families or those who enjoy hosting guests. This spacious plot offers a wonderful opportunity for family living in a sought-after location.

With its unique features and well-maintained interiors, this house is truly deserving of a viewing. We encourage you to act swiftly to avoid disappointment, as properties of this calibre are in high demand. Photos and a floor plan will be available soon, but do not hesitate to arrange a visit to experience the charm of this home for yourself.

****The main house and Annex are on separate tax bands and utilities but are on 1 title****

- Impressive 3 Bedroom House
- Sought After Ditton Aylesford Borders
- Lovely Updated Modern Kitchen/Diner
- 538 Sq Ft 2 Bedroom Separate Annex
- Huge Driveway
- 180 ft Garden
- Walking Distance To Ofsted Schools
- Photographs And Floorplan Awaited
- EPC Awaited





LOCAL AREA INFORMATION FOR DITTON

Ditton is a sought after area thanks to its convenient access to so many things.

For recreation you have the local leisure centre at Larkfield, many parks, green spaces and countryside close by. Leybourne Lakes and Manor Park are particularly noteworthy.

There are a good range of shops, supermarkets and eateries at Ditton, Larkfield and Aylesford. West Malling is the closest town (less than 2 miles away) and is one of the most attractive small towns in mid-Kent with a wide main street lined on each side by a fine collection shops and eateries. Maidstone is approximately 4.6 miles away.

For the commuter Junction 4 of the M20 gives access to the motorway network. There are mainline train stations at nearby West Malling, Aylesford and East Malling.

For education there is a comprehensive range of primary, grammar and private educational opportunities. For more schools information please visit www.kent-pages.co.uk/education or ask for a Page & Wells Key Facts for Buyers Guides.

ADDITIONAL INFORMATION

Freehold

Main House Council Tax Band D

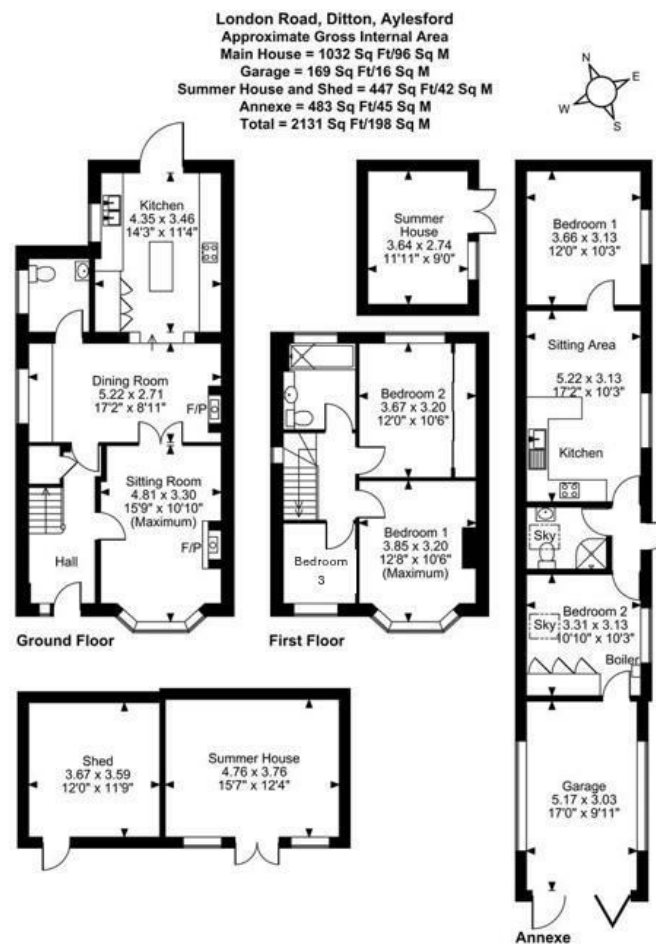
Annex Council Tax Band A

EPC Rating Awaited

UPVC Double Glazing

Gas Central Heating





FOR ILLUSTRATIVE PURPOSES ONLY - NOT TO SCALE
The position & size of doors, windows, appliances and other features are approximate only.
© ehouse. Unauthorised reproduction prohibited. Drawing ref. dig/8656984/SS

Page & Wells limited for themselves and for the vendors of this property whose agents they are give notice that: 1. These particulars do not constitute any part of, an offer or a contract. 2. All statements contained in these particulars as to this property are made without responsibility on the part of Page & Wells Limited or the Vendor. 3. None of the statements contained in these particulars as to the property is to be relied on as statements or representations of fact. 4. Any intending purchaser must satisfy himself by inspection or otherwise as to the correctness of each of the statements contained in these particulars. 5. The vendor does not make or give, and neither Page & Wells Limited nor any person in their employment has any authority to make or give any representation whatsoever in relation to this property. These particulars are supplied on the understanding that all negotiations are carried out throughout Page & Wells Limited. Properties with a reference prefixes EAA are those which Page & Wells Limited disclose an interest in accordance with the provisions of the Estates Agents Act 1979

